

Safety and Ordering

SAFETY

Avoid direct skin contact with both wet and dry cements. Avoid breathing cement dust by wearing a P1 or P2 dust mask suitable for airborne dust. Wear appropriate protective clothing and footwear.

Additional information in the form of material safety data sheets is available on request. Phone 1300-138-996.



FIRST AID

In the event of skin contact wash with clean water to minimise possible irritation. If material gets into eyes wash immediately and repeatedly with eye wash solution or clean water.

NEED TECHNICAL HELP?

For more information contact Technical Support on our help-line 1300-138-996.

SALES AND ORDERING:

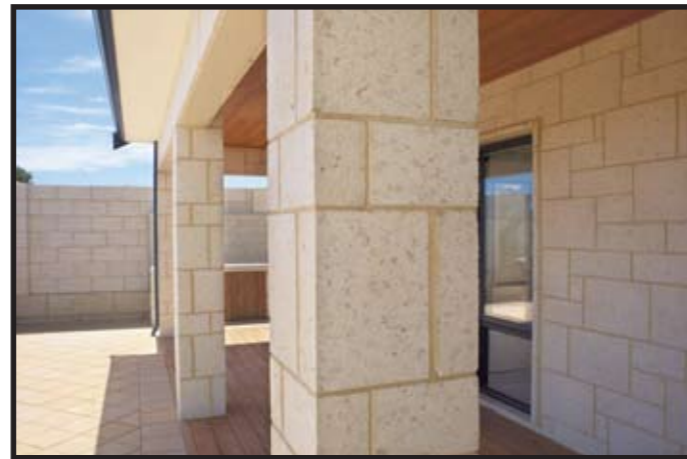
Customer Service Centre:
(08) 9411 1166

The information contained in this brochure is for general guidance only. It does not replace the advice of professional consultants. Where unusual conditions or requirements exist seek professional advice. No liability is accepted by Swan Cement or the suppliers, for any associated expenses, losses, damages or costs resulting from the use of this information, as the use is beyond their control. Incorrect use of any product, or failure to adhere to recommendations in this sheet, or those of any supplier, and any associated safety information may result in serious damage or injury.

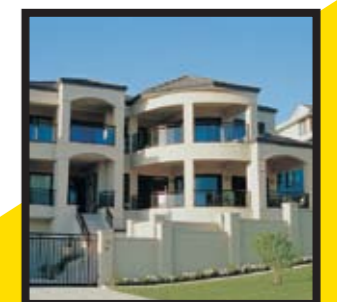
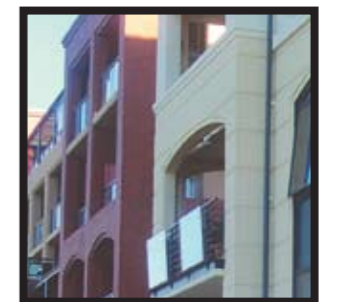
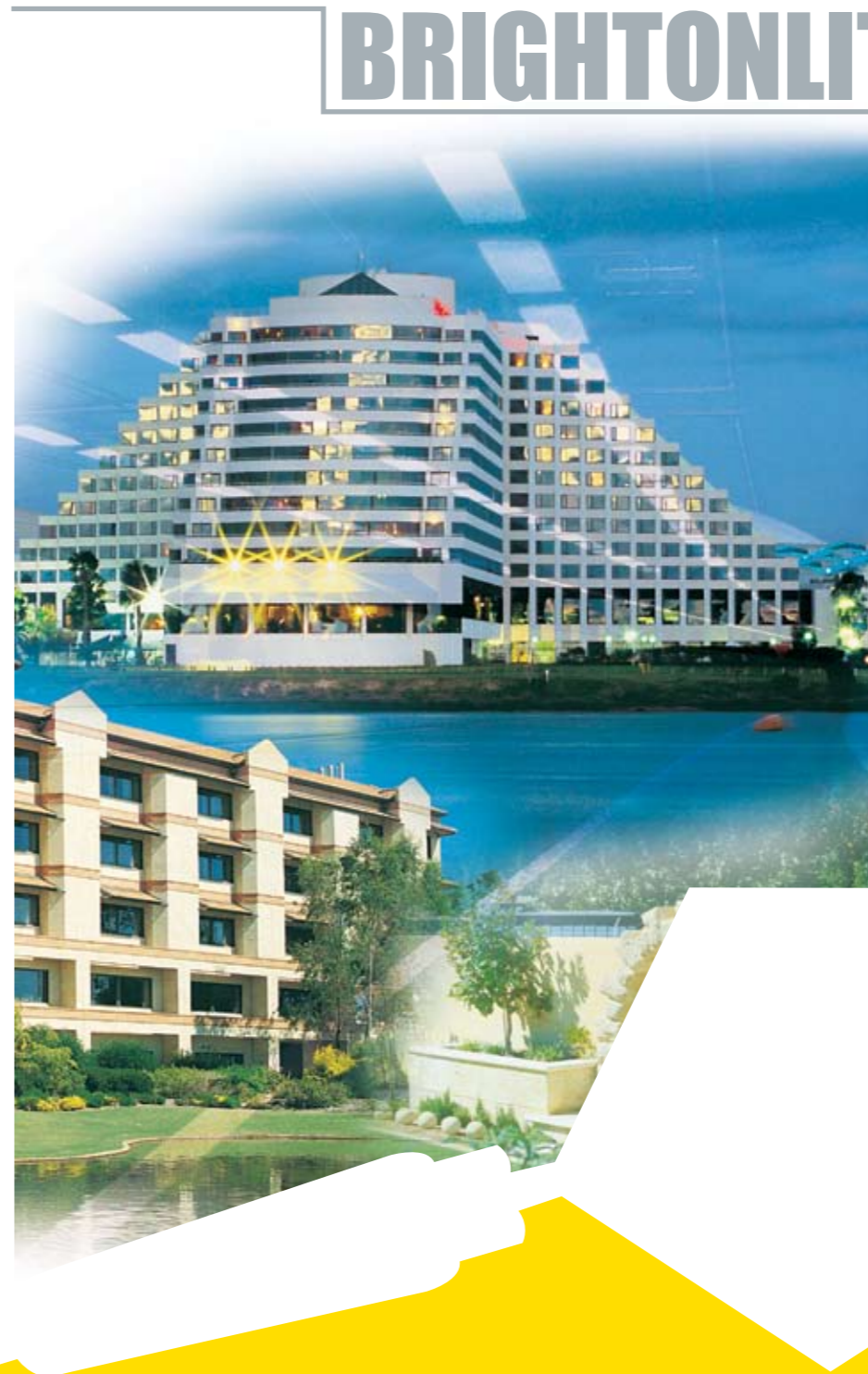
Swan, Swan Cement, the Swan Cement logo, Marvelime and Brightonlite are registered trade marks of Adelaide Brighton Cement Limited and are used under licence.

Brightonlite Cream Cement is available in:

Bulk Tanker	Bulker Bags	20kg & 40kg Bags



TYPE GP BRIGHTONLITE® CREAM CEMENT



TYPE GP BRIGHTONLITE CREAM CEMENT

PRODUCT INFORMATION

Swan Cement®

PRODUCT INFORMATION AND PROPERTIES

Swan Cement offers the best in quality cream coloured cement with its Type GP *Brightonlite* Cream bagged cement. *Brightonlite* allows builders, specifiers and the home handyman to use a rich cream coloured cement or mortar manufactured here in WA.

With strict quality testing and controls, peace of mind is an added benefit when you use Type GP *Brightonlite* Cream Cement. Designed especially for use in brickwork, renders and other general uses, *Brightonlite* is a popular choice among top builders and tradespeople throughout the construction industry.

Quality, stability and a rich consistent colour is all you need to get the job done right. Ask your local hardware store for Type GP *Brightonlite* Cream Cement.

Concrete Guide

Mix	Concrete Use
A	High strength structural mixes: precast concrete and heavy duty floors.
B	General structural concrete: paths, driveways, garage floors.
C	Footings: for domestic brick walls, fence posts.

Parts by Volume			
Mix	Cement	Concrete Sand	Aggregate
A	1	1.5	3
B	1	2	4
C	1	2.5	5

Quantities To Make One Cubic Metre of Concrete (1m ³)			
Mix	Cement (20 kg bags)	Concrete Sand (m ³ estimate)	Aggregate (m ³ estimate)
A	18	0.4	0.8
B	14	0.4	0.8
C	12	0.4	0.8

Render Guide

Use	Substrate	Mix Ratios By Volume			Cement 20kg Bags	Marvelime 20kg Bags
		Cement	Marvelime	Plasterers Sand		
Float / base coat	Dense Concrete	1	1	5	12	5
	Clay Bricks	1	1	7	10	4
	Calcium Silicate	1	1.5	6	10	6
	Concrete Blocks	1	1	6	11	4
	Limestone	1	2	9	8	6
Sand finish base coat	Plaster Blocks	1	1	7	10	4
		1	1	4.5	12	5
Sand finish top coat		1	1	5	12	5

General Notes:

Approximately 1.2m³ of damp sand is required for 1m³ of render.

Estimate based on 1m³ of render covering 100m² at 10mm thickness.

Chemical Properties

Parameter	Swan Typical	AS3972-2001 Limits	Test Method
SiO ₂	22.0%	3.5% Max	XRF
Al ₂ O ₃	4.5%		XRF
Fe ₂ O ₃	0.5%		XRF
CaO	65.4%		XRF
MgO	2.4%		XRF
SO ₃	2.5%		XRF
LOI	2.3%		AS2350.2
Chloride	0.02%		ASTM C114
Na ₂ O Equivalent	0.50%		XRF





General Notes:

- Use only recommended concrete, mortar or plastering sands free from clay and organic contamination.
- Use a 50/50 blended 20mm + 10mm stone for concrete aggregate.
- Keep water content to the minimum required for mixing and placing. The more water, the lower the strength.
- Use a standard sized vessel eg., bucket, to measure all materials.
- Admixtures should only be used according to the manufacturer's instructions. As *Marvelime* contains an air-entraining agent, additional air entraining agent is not required.
- Quantities estimated are typical industry usage and will vary according to individual use patterns.
- For additional DIY information please refer to www.swancement.com.au.

Mortar Guide

Mix	Masonry Exposure Environment
M4	Retaining walls. Walls located within 1km of a surf coastline or 100m of a non-surf coastline eg., estuary and coastal river zones. Walls within 1km of significant industry that releases chemical pollutants. Walls below the damp-proof course or ground level or in contact with aggressive soils.
M3	Walls between 1km and 10km of a surf coastline or between 100m and 1km of a non-surf coastline eg., estuary and coastal river zones. Walls in contact with fresh water or the ground in non-aggressive soils. Internal walls subject to wetting and drying of a non-saline character.
M2	External above ground walls greater than 10km of a surf coastline or greater than 1km of a non-surf coastline eg., estuary and coastal river zones. Interior walls not subject to wetting and drying.
MCS	Calcium silicate brickwork - single story internal walls.

Brightonlite Cream Cement

				
Premix	Site Mix	Brickwork	Moulded	Products Renders

Physical Properties

Parameter	Swan Typical	AS3972 Limits	Test Method
Fineness Index	385 m ² /kg	n/a	AS2350.8
Normal Consistency	29.6 %	n/a	AS2350.3
Initial Set Time	1:45 hour:min	0:45 hour:min Min	AS2350.4
Final Set Time	3:00 hour:min	6:00 hour:min Max	AS2350.4
Soundness	1mm	5mm	AS2350.5
ISOCEN Mortar Bar Strengths			
3 day	43 MPa	n/a	AS2350.11
7 day	49 MPa	25 MPa Min	AS2350.11
28 day	60 MPa	40 MPa Min	AS2350.11
Flexural Strength by Bond Wrench (1)	Swan Typical	AS3700 Requirements	Test Method
M2 - 1:2:9 mix - 7 day	0.3 MPa	0.2 MPa	AS3700
M3 - 1:1:6 mix - 7 day	0.4 MPa	0.2 MPa	AS3700
M4 - 1:0.5:4.5 mix - 7 day	0.5 MPa	0.2 MPa	AS3700

(1) Test mortars for flexural strength determination were batched in a 3 cubic foot mixer with commercially available brickies sand to give an initial flow of 125% to 135% and air content 10% to 14%. Bricks were 16 core Midland Brick Cream. Tested to AS4455 initial rate of absorption 0.8 - 2.5kg/m³/min and characteristic compressive strength of 15 MPa.

Mix Design - Parts by Volume			
Mix	Cement	Marvelime	Brickies Sand
M4	1	0.50	4.5
M4 alternative mix	1	0.25	3
M3	1	1	6
M2	1	2	9
MCS	1	2	9
MCS alternative mix	1+thickener	0	5
Estimated Quantities To Place 1000 standard bricks (230L x 110W x 76H)			
Mix	Cement (20kg bags)	Marvelime (20kg bags)	Brickies Sand (m ³ estimate)
M4	8	1.5	0.6
M3	7	2.5	0.6
M2	5	3.5	0.6

Please refer to AS3700 "Masonry Structures" for more detailed information.

